



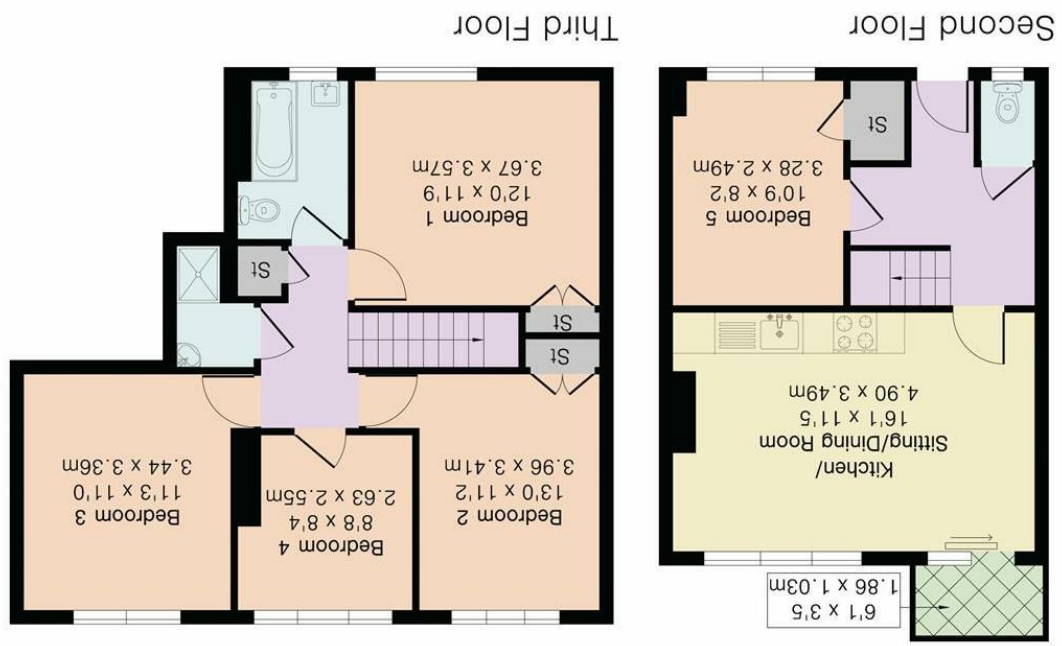
# Petersfield Rise,

Roehampton, London, SW15 4AJ



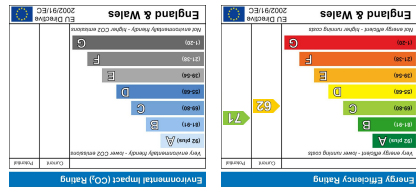
34 Richmond Road  
 Kingston upon Thames  
 Surrey  
 KT12 5ED  
[www.gibsonlane.co.uk](http://www.gibsonlane.co.uk)  
 Tel: 020 8546 5444

**Approximate Gross Internal Area 963 sq ft - 89 sq m**  
 Second Floor Area 390 sq ft - 36 sq m  
 Third Floor Area 573 sq ft - 53 sq m



PINK PLAN

Floor plan produced in accordance with RICS Property Measurement 2nd Edition. Although Pink Plan Ltd ensures the highest level of accuracy, measurements of doors, windows and rooms are approximate and no responsibility is taken for error, omission or misstatement. These plans are for representation purposes only and no guarantee is given on the total square footage of the property within this plan. The figure icon is for initial guidance only and should not be relied on as a basis of valuation.



**Important Information**  
 All appliances listed in these details are only 'as seen' and have not been tested by Gibson Lane, nor have we sought certification of warranty or service, unless otherwise stated. Measurements, areas and distances are approximate. Floor plans and photographs are for guidance purposes only and must not be relied upon for any purpose. These details are offered on the understanding that all negotiations are made through this company. Neither these particulars, nor verbal representations, form part of any offer or contract, and their accuracy cannot be guaranteed.





- \*AVAILABLE 10th JULY 2026\*
- 5 Bedroom Split Level Maisonette
- 3 Double Bedrooms
- 2 Single Bedrooms
- Open Plan Kitchen
- 2 Bathrooms
- Great Access For University
- EPC Rating - D
- Council Tax Band - C



£2,900 Per Calendar Month

Petersfield Rise,  
Roehampton,  
London,  
SW15 4AJ



**Description:**

\*AVAILABLE 10th JULY 2026\* With Balcony

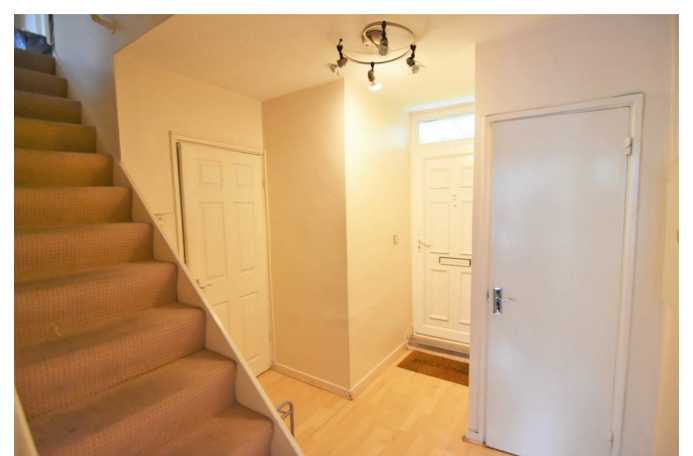
Gibson Lane present a very bright and spacious 5 Bedroom maisonette with 3 double and 2 single bedrooms. The property comes fully furnished which includes desks and chairs in all rooms. The neutral decor throughout helps to provide a real sense of home to an already attractive property.

An ideal spacious maisonette:

- Great for Sharers.
- 5 Bedroom Split Level Maisonette.
- 3 Double Bedrooms.
- 2 Single Bedroom.
- Open-plan kitchen/living area with sofa seating and dining area.
- Generous living space.
- Great access for University.
- Fridge/Freezer, Dishwasher.
- Professionally Managed
- 24 Hour Property Maintenance.

**Location:**

Ramsdean House is located just a short walk Roehampton University. The location is well served with many different transport links which include buses to Putney, Hammersmith and Kingston, the A3 is in very close by which provides quick access in and out of London. Close to various Universities and Queen Mary's Hospital.



**Furnishing:** Furnished  
**Local Authority:** Wandsworth  
**Council Tax Band:** C  
**Available Date:** 10th July 2026  
**Deposit:** £3,346  
**Tenancy Term:** Long Term